



Teresa Saia

## MAY DEMO— TERESA SAIAS' RADIANT & RICH COLOR

Teresa Saia has firmly established herself within the art community, demonstrating a sophistication of style, dynamic use of color, and sensitivity for light and mood. A native of Washington, her studio is located in the historic Seattle district of Pioneer Square, an environment that provides vital energy for her creativity.

Known for consistent, direct style, she captures the attention of many collectors with her expressive use of radiant and rich color. The mood and emotion conveyed in her paintings evoke a deep sense of the mysterious, romantic, peaceful and yet familiar settings.

She has taught for 15 years with her inspiring approach and she is a recognized workshop instructor nationally and in Europe. She enjoys creating a supportive and energetic atmosphere in which students can thrive.

### PASTEL DEMONSTRATION

The medium of pastel is enjoying a renaissance, not seen since the impressionists. At this time artists in this medium have available to them the finest pure dry pigment pastels. Many are handmade. The beauty of pastels is that they are made with the same pure pigments as the finest oil paints, but have very little binder to hinder their



inherent luminosity. Because they sit on the surface of the ground (paper), they have excellent light refraction quality.

## CALENDAR

### May

- 3-30** Juried Show
- 1** Non-Juried change, Breast Center
- 8** Juried Show Reception
- 10** Board Meeting, Newsletter deadline
- 25** General Meeting, Teresa Saia

### June

- 5** Non-Juried change, Cafeteria
- 14** Board Meeting, Newsletter deadline
- 6-10** Jun. Wkshp, Samish IS., John Ringen
- 22** General Meeting, Jim Adkins
- 26** Non-Juried change, Breast Center

### July

- 14** Summer Picnic, Nola Allen's cabin

### September

- 7** Board Meeting, Newsletter deadline
  - 12-16** Fall Paint Out, Samish Island
  - 28** General Meeting, Ann Olwyn
- (continued page 3)*

### General Meeting Information/Schedule:

Ronald United Methodist Church,  
17839 Aurora Ave N, Shoreline, WA

- 10:45-11:15** Paintings accepted for POM.
- 11:15-11:30** Vote for POM. Socialize. POM votes counted
- 11:30-12:30** Business meeting
- 12:30-1:00** Clean up, Prepare for Demo
- 1:00-2:15** Demonstration

### May kitchen volunteers—

Joan Poor, Mary Lou McCollum

### May snack volunteers—

JoAnn Cordiz, Mary Lou McCollum, Paula Parks, Sydney Anderson, Barbara Duniway, Marylyn Miller

Teresa will demonstrate the techniques she uses to infuse her paintings with mood and drama. Learn how to combine a variety of photo references into a simple, concise, but powerful composition and successful painting.

## PAINTING OF THE MONTH



**First Place** (top left)

Nola Allen • *Quite Bend*

**Second Place** (left)

Clifford Burkey • *Aboretum Lagoon*

**Third Place** (top)

Lynn Kerr • *Fisherman's Terminal*

## AND SIGN IN PLEASE—

*from Keith Artz*

A new chart with members' names will replace the old sign-in sheets we have used at our general meetings. When you come to a meeting, find your name and put a check mark under the meeting date. This act will become more important now than ever before. Any member wishing to enter a painting into the next and future juried shows will be required to have attended at least three meetings in a calendar year since the previous juried show. The banquet, picnic, and the September Paint Out (If it falls on the date of the general meeting) will be considered 'meetings' for this purpose.

This requirement is not new. It has been in the Standing Rules for the Juried Show for many years, but it has not been a problem until recently. The number of members not meeting this requirement for the show has been increasing to the point that the Board decided to actively reinstate the rule. So, make sure that you sign in at every meeting. Thank you.

## MEMBERSHIP REPORT

*by Helen Drummond*

Please welcome new Associate Member **CONNIE MILLER**, and add her to your yearbook.

**CONNIE MILLER**  
2917 Leonard Dr  
Everett, WA 98201  
425-259-1912

And Congratulations to **JIM FARRAND**, **MARYLYN MILLER** and **JOAN POOR** who screened in last month and are now Active Members.

They bring some wonderful new talent to the group and a variety of styles. Welcome to active status!

### *In case you missed it—*

Kathie Bliss reported that Danny O'Rourke's home was sold with 10% of the total real estate commission (\$900) going to the Scholarship Fund, a special condition set by Caldwell Banker.



## APRIL DEMO

*from Keith Artz*

The first thing **JACQUI BECK** said in her presentation was, “Play! Have fun with your art and play music as you work. It will show up in your paintings.” It was easy to see Jacqui’s playfulness – as well as the love she has for her materials and her work – as she talked.

Jacqui explained what she likes about working in acrylics: fast

drying, making changes easily, easy clean-up, no glass needed in framing, and it is less toxic than oils. She also discussed her dislikes for the medium, but they seemed minor and easily worked around. A major part of her demo was the descriptions of the many materials that she uses including paint, gesso, moulding paste, gels, soft gel, and fluid medium (to mention a few). She also discussed some of the tools she has found to help give texture to her paintings, such as credit cards, mesh, textured fabric, hand made stamps, lace, and her daughter’s clothing. She noted that texture can be added to a painting at any time in the process.

Her descriptions of these materials and tools went a long way in helping demystify the process of her amazing acrylic artistry. “Paint for color, pattern, texture, and composition, and again, have fun.” Thank you, Jacqui. Your love for your work is infectious.

## ART SUPPLY & BOOK SALE FOR SCHOLARSHIP & LIBRARY FUNDS

*from Keith Artz*

Please start sorting through your art supplies and books for donation to our annual sale at the May General meeting. This event has generated hundreds of dollars for the two funds over the past several years. Members bring their donated materials

## PLEIN AIR: MATERIALS AND EQUIPMENT

*by Eva Butler*

In the studio, we tend to paint what we know. We may have a photo, but the camera captures much less detail, light, and color nuances than the eye perceives. We can better understand how the light effects the local colors, values, and shapes through direct observation.

When heading out, we want to schlep as little of the studio as we need, so it’s better to limit our paint, tools, etc, and keep things light. The most popular media for plein air is watercolor. It’s lightweight, can be compactly packed, and dries fast so it’s not messy to transport. You can record fast changing atmospheric effects quickly with it. With a prestretched paper (or watercolor book or sketchbook), some tubes of color with a plastic palette, 2-3 brushes, and a water container... you’re set to go.

and other members buy them with a donation based what they think the items are worth. If you don’t find anything of interest in the merchandise available, you are encouraged to write a check to Seattle Co-Arts for either or both of the funds. Money raised for the Library fund will be used to purchase new books and CDs, and the Scholarship donations will allow Co-Arts to continue to award a \$1,000 scholarship to a deserving art student. This not only promotes our mission as a not-for-profit, educational organization, it also helps expand the visibility and community impact of Seattle Co-Arts

Oil paints are a little more cumbersome. They are less fluid and because of the function of the canvas, they are slower to manipulate. But the paint is more easily controlled, so there are fewer happy (or unhappy) accidents. You want to keep your canvas or panel small (16x20 or less) because it’s easier to cover in 2-3 hours.

For acrylic painters, my advice is the same as for oil. They are less messy because they dry fast, and when you learn to handle them, you can make your work look like an oil or a watercolor. It is necessary though to take a small spray bottle to keep your palette moist.

Be sure you take paper towels, plastic bags, and a waste water bottle for clean up. You may want to take a stool or a collapsible camp chair with shoulder straps for carrying. Bring munchies and drinking water. Sunscreen is a must, and insect repellent is highly advisable. Dress in layers so you can strip down or add more clothes. Remember to respect the environment. Happy painting!

## Calendar cont’d from page 1

### October

- 2 Non-Juried change, Cafeteria
- 4-5 Fall Workshop, Teresa Saia
- 11 Board Meeting, Newsletter deadline
- 26 General Meeting, TBA
- 30 Non-Juried change, Breast Center

### November

- 8 Board Meeting, Newsletter deadline
- 23 General Meeting, TBA

### December

- 4 Non-Juried change, Cafeteria
- 5 Holiday Banquet
- 6 Leadership Transition Meeting

## Treasury update –

As of 3-31-10: Co-Arts Chase working checking account has \$12,484.60 and Scholarship has \$1440. The Credit Union CD has \$11,377.27.

# CO-ARTS PLEIN AIR SCHEDULE SUMMER 2010 .....

by Eva Butler

Welcome to Co-Arts Plein Air. Everyone is invited, nonmembers, too. We paint on Wednesdays from 9:30 am until lunch at 12:30, when we will look at all the paintings (“show and tell”). Carpool if you can. Please paint with others nearby for security. Also check-in with hosts so we know you are there.

Please dress in layers, wear sunblock, and bring bug repellent. Be sensitive to the environment. Please do not dump paint,

solvents, and dirty paint water into ponds and other ecologically sensitive areas.

This year there are three Saturday venues, each a month apart, as requested. Contact person is Eva Butler at (206) 325-4676, (206) 931-2010. Backups are Judith Silverman at (206) 329-1094, (206) 245-4399, Lynn Kerr at (206) 619-4206, and Julie Codd at (206) 860-9929. For more Plein Air opportunities, visit the EAFA website at [www.eafa.org](http://www.eafa.org)

Date	Driving Directions/Notes
6/2	<p><b>Woodland Park Rose Garden (or Zoo)</b>                      From I-5, take the NE 50th Street exit, heading west until going under the Aurora overpass. The Rose Garden is the first right. Parking at the Woodland Park Zoo is expensive, but if you arrive early, there should be parking on the street. Turn left off of N 50th St, go one block south, and there should be parking along N 45th St. <b>Features:</b> <i>The Rose Garden is really lush this time of year (if you have a pass, the Zoo is always fun). Lunch in the Rose Garden, bathrooms at upper Woodland Park and at the Zoo.</i></p>
6/9	<p><b>Volunteer Park</b>                      From north Seattle, head south on I-5, taking the Roanoke Exit, taking the first left at the light. Head east on Roanoke, turning right onto 10th Ave E. Go uphill, heading south, until E Boston. Turn left, following it east until it curves right and goes uphill, becoming 15th Ave E. At the first stop (4-way intersection), E Galer, take a right into the park. We'll meet by the black donut, across from the museum. <b>Features:</b> <i>Water tower, reservoir, Seattle skyline, museum, koi ponds, conservatory.</i></p>
6/16	<p><b>Meadowbrook Park, 35th Ave NE (between NE 105th and NE 110th)</b>                      Take the Northgate Way exit going east all the way down to Lake City Way. Turn left onto Lake City Way NE. Turn left driving north to 115th, turn right, heading east til 35th NE. Turn right, going 3 long blocks til Meadowbrook Playfield and pool. Park in the parking lot. Meadowbrook Park is across the street. Follow the path across the bridge to ponds. <b>Features:</b> <i>Ponds, waterfowl, bridge, boardwalks, shady paths.</i></p>
6/23	<p><b>La Conner</b>                      Meet on the south end of First Street, before you have to turn left, away from the waterfront near La Conner Town Hall. (Call me if you need a ride at 206 325 4676) <b>Features:</b> <i>Waterway, old buildings, boats, Rainbow Bridge, museum, and great eats!</i></p>
6/30	<p><b>Smith Cove Park and Elliot Bay Marina by Palisade Restaurant (at SE foot of Magnolia)</b>                      Off I-5, take the Denny Way exit heading west, following the arterial to Western Ave to Elliot Ave W. About one and a half miles from where Denny becomes Western then Elliot, take the Magnolia Bridge exit, keeping to the right. Follow signs to the marina and cruise ships, to the left, until off the bridges. Then follow the signs to the marina and Smith Cove Park. <b>Features:</b> <i>Smith Cove Park on the east end has a commercial and city view. Bathrooms are under Palisades Restaurant. Enter on the lower level west side of the building. West end - Magnolia hillside with shoreline. Boats (mostly yachts) are all over the place. Houses on the bluff, a view of Magnolia Bridge. Parking is by the restaurant and the street, and by Smith Cove Park.</i></p>
7/7	<p><b>Magnuson Park Small Boat Marina (Seattle, in former part of Sandpoint Naval Base)</b>                      Take NE 65th St heading east until Sandpoint Way NE. Turn left on Sandpoint Way NE and follow it until NE 74th St. Turn right into the park, taking the first left possible. Paralleling Sandpoint Way, follow the road north, going under an overpass for NOAA. Park on the right. If you would like to paint elsewhere, please do so with at least one other person and come back here at 12:30 for lunch. <b>Features:</b> <i>Views toward Juanita, NOAA, and lots of small boats, older buildings.</i></p>
7/14	<p><b>Picnic at Nola's Cabin</b></p>
7/21	<p><b>Golden Gardens Beach and Marina</b>                      Take the NE 85th St exit from I-5, heading west toward 32nd Ave NW (where 85th St ends). At 32nd, turn right on Loyal and go north for a short distance, bearing left on Golden Gardens Way. Drive downhill, through the park, to the beach area. We'll have lunch at the north end of the parking area by the ponds. <b>Features:</b> <i>Boat basin on south, shoreline, herons, duck pond, and, on hot days, umbrellas, sunbathers.</i></p>
7/28	<p><b>Bellevue Botanical Garden at Wilburton Park, Bellevue: 12001 Main St.</b>                      Take I-405 to the NE 8th St exit in Bellevue heading east by downtown Bellevue. Go east for 1/2+ mile and turn right (south) onto 124th Ave NE. It makes a sharp right and becomes Main St. The Garden entrance will be on the left side at the top of the hill (about 3/4 miles from NE 8th). <b>Features:</b> <i>Dahlias, perennials, sculptural plantings, flower borders, bridges, pond, stream, tea house.</i></p>
8/4	<p><b>Greenlake NW parking lot near Duck Island</b>                      Take the Ravenna Exit off I-5 north, or the NE 65th St exit (Exit 171) heading south, to Greenlake Drive North. Follow the lake, keeping to the left roads, counterclockwise circling the lake. It will become West Greenlake Drive N. Park at the parking lot on the left near the tennis courts and Bathhouse Theatre. <b>Features:</b> <i>Lake, trees, island, boats, walkers, lily pads.</i></p>

<b>8/11</b>	<b>Center for Urban Horticulture (3501 NE 41st St), Seattle</b> Take the NE 45th St exit off I-5 heading east past University Village. Turn right onto Mary Gates Blvd (at 5 corners), and the Center will be on your right. <b>Features:</b> <i>Flowers, fountain, fruit tree orchard, grassy fields, and pea patch to the west.</i>
<b>8/18</b>	<b>Museum of History and Industry, 2700 24th E, Seattle.</b> Heading east on 520 from I-5, take the Montlake exit (the last exit before the floating bridge). Keep to the right, going straight-ish through the lights, staying parallel with the freeway on Lake Washington Blvd. E. One block after crossing 23rd E, take a left to the Museum of History and Industry. Park below. Restroom use in the museum is free. Lunch by the totem pole next to the canal, just north of the museum. <b>Features:</b> <i>To the east: waterside trail to Foster Island, Views of Union Bay, lagoon with water lilies, marsh, reflections of Freeway columns, stadium. To the north: Lake Washington Canal, University, Montlake Bridge, totem poles. Bathrooms free in museum.</i>
<b>8/25</b>	<b>Country Village, Bothell (728 238 SE Bothell)</b> Go north on Lake City Way (522) around the north end of Lake Washington (through Kenmore) for approximately 8 miles, to Bothell, turning left on Highway 527 (Bothell-Everett Highway). Continue for about 3 miles, turning left at 218th SE into the Village and park your car. <b>Features:</b> <i>Quaint cottages with streams, pond, train car, boat, etc.</i>
<b>9/1</b>	<b>Dunn Gardens (An Olmstead Heritage Garden) 13533 Northshire Rd NW</b> Take exit 175, NE 145th St exit, and follow NE 145th St west. Continue across Aurora and Greenwood Ave N until you get to a stop sign at 3rd Ave NW. Turn left heading south, then turn right on NW 137th St (heading west). Turn left on Northshire Road NW. Go past three houses on the left and turn right at the entrance marked by two brick columns and an open white gate. Follow small green signs to a parking lot past the grey two-story cottage with garage. <b>Features:</b> <i>panoramic views, original house was used as a summer residence for the Dunns, plantings originally planned by Olmstead. Gorgeous plants. Perennial borders.</i>
<b>9/8</b>	<b>Good Shepherd Center</b> Take 50th Ave NE exit off I-5 heading west. Turn left on Sunnyside Ave N and turn right into the Good Shepherd Center in the middle of the block. <b>Features:</b> <i>Seattle Tilth, gardens, Good Shepherd Center, playground, gazebo, fruit trees.</i>
<b>9/15</b>	<b>Lighthouse at Mukilteo</b> From I-5, take exit 189 (to Whidbey Island Ferry and Mukilteo). Head west on Highway 526 past Boeing. At the intersection with the Mukilteo Speedway (Highway 525), turn right and follow signs to ferries. Continue past the line for the ferries, taking a left immediately before the ferry entrance. Take the second left into the parking lot for the park and lighthouse. Different rates for parking in different parts of the parking lot. <b>Features:</b> <i>Puget Sound, shoreline, lighthouse, ferry terminal, islands</i>

## Saturday Venues (as requested)

Date	Driving Directions/Notes
<b>6/19</b>	<b>Bellevue Botanical Garden at Wilburton Park, Bellevue: 12001 Main St.</b> Take I-405 to the NE 8th St exit in Bellevue heading east by downtown Bellevue. Go east for 1/2+ mile and turn right (south) onto 124th Ave NE. It makes a sharp right and becomes Main St. The Garden entrance will be on the left side at the top of the hill (about 3/4 miles from NE 8th). <b>Features:</b> <i>Iris es should be in bloom, bridges, pond, stream, water cascades, tea house—Plethora of plantings.</i>
<b>7/17</b>	<b>Museum of History and Industry, 2700 24th E, Seattle.</b> Heading east on 520 from I-5, take the Montlake exit (the last exit before the floating bridge). Keep to the right, going straight-ish through the lights, staying parallel with the freeway on Lake Washington Blvd. E. One block after crossing 23rd E, take a left to the Museum of History and Industry. Park below. Restroom use in the museum is free. Lunch by the totem pole next to the canal, just north of the museum. <b>Features:</b> <i>To the east: waterside trail to Foster Island, Views of Union Bay, lagoon with water lilies, marsh, reflections of Freeway columns, stadium. To the north: Lake Washington Canal, University, Montlake Bridge, totem poles Bathrooms free in museum.</i>
<b>8/28</b>	<b>Farrel McWhirter Park, Redmond 195 NE Redmond Rd</b> Take 520 east past downtown Redmond until it joins Avondale Rd. Exit onto Avondale heading northeast on it for just a little under a mile. Take the right V onto Novelty Hill Rd. for about 1/4 mile. Take the first left onto Ne Redmond Rd. This will become NE 102nd Place. The park will be on the left. If you go to NE 108th Pl., you will have gone too far. <b>Features:</b> <i>meadows, barns, paddocks, horse coralls, animals, woods</i>

### PLEASE SUPPORT OUR SHOW SPONSORS

- Autumn's Framing and Gallery** • 537 Main St, Edmonds, WA 98020 (425) 778-5150
- ADG Printing.com** • 19231 36th Avenue W, Lynnwood, WA 98036 (425) 771-7603
- Art & Soul Photography** • 2860 Northwest Market St, Seattle, WA 98107 (206) 297-1223
- Artist & Craftsman** • 4350 8th Ave NE, Seattle WA 98105 (206) 545-0091
- Cheap Joe's Art Stuff** • [www.cheapjoes.com](http://www.cheapjoes.com)
- Dakota Art Store** • 6110 Roosevelt Way NE, Seattle WA (206) 523-4830
- Digital Canvas Northwest** • 3003 S Lake Crabapple Rd, Marysville, WA 98271 (206) 550-2510
- Eafa** • Eastside Association of Fine Arts, [www.eafa.org](http://www.eafa.org)
- FrameWright & Kaewyn Gallery** • 10101 Main St., Bothell, WA 98011 (425) 483-7385
- Unique Art Framing** • 3429 Airport Way S, Seattle, WA 98134 (206) 447-9441
- University Bookstore** • 4326 University Way NE, Seattle, WA (206) 634-3400

# SEATTLE CO-ARTS 60TH ANNUAL JURIED SHOW

by Judith Heim

May 8th marked the reception for Seattle Co-arts 60th annual juried show at the Art Institute of Seattle. It was a beautiful sunny afternoon and with all of our amazing artists there was plenty of sunshine inside as well! Guests enjoyed an eclectic selection of wonderful artworks, good friends, harp music by Ginny Berger, a sweeping view of Elliot Bay and the warm hospitality of Mark Livingston on behalf of The Art Institute of Seattle.

Congratulations are in order for our award winners: 1st place – **Jackie Van Noy** for *Morning Run*, 2nd place – **Jane Becker** for *Dried Hydrangeas with Fruit*, 3rd place – **Kay Parsons** for *Tiger Moth*. Honorable mentions went to **Clifford Burkey**, **Dot Stanton**, **Sandra Kahler**, **Shirley Moldenhauer**, **Marianne Harlor** and **Eunice Smith**. The work chosen reflected the diversity of styles and mediums within our group.

The Juror for this event was Mitchell Albala, who is represented by Lisa Harris Gallery, teaches at Gage academy and recently authored a book on landscape painting. When viewing art he says:

*“A successful painting is not just about technical mastery. It’s about aesthetic ideas as well. Both are necessary for the art to be in balance and whole. Whether abstract or representational, two-dimensional or three-dimensional, I am drawn to work that makes me think, that reflects the Artist’s explorations and shows me the world in a way I have not seen it before.”*

We want to extend a very special thanks to everyone who lent their time and talent to making this year’s show a success –

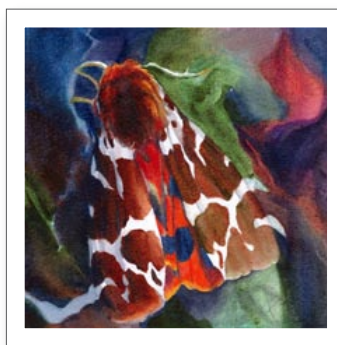
It takes a village! Co-Chairs – **Judith Heim & Sue Gill Rose**, Graphic Design/Posters/postcards and programs – **Jim Farrand** and **Sandra Kahler**, Digital Cataloging – **Kathryn Flanagan**, Publicity – **Judy O’Dell**, Award Donations – **Lynn Kerr**, Name tags – **Sally Abbey**, Support help – **Paula Parks**, **Joan Poor**, and **Victoria Galbraith**.



Jackie Van Noy 'Morning Run'



Jane Becker 'Dried Hydrangeas with Fruit'



Kay Parsons 'Tiger Moth'

*more pics to come next issue!*

## WORKSHOPS & CLASSES



Teresa Saia

## TERESA SAIA 2-DAY FALL WORKSHOP

from Teresa Saia

This workshop (October 4-5) will be an intensive workshop, designed to give the artist new to pastel or continuing in pastel a boost in the creative process. An overview of the materials and their uses will be presented. Teresa will do a demonstration each morning, dealing with different subject matter each day. The demonstrations will show how Teresa infuses her paintings with dynamic color and drama. The participating artists will also be asked to work on a different image each of the two days. Also emphasized will be the necessity of good value studies to develop solid compositions. Relating value masses properly, as well as developing a harmonious palette and edge quality will be discussed and demonstrated. Framing techniques will be presented.

Teresa enjoys creating a supportive and energetic atmosphere necessary for artistic growth, feeling that it is necessary to relax and enjoy the journey – exploring areas outside of our comfort zone. There will be lots of personal attention and help in the painting process.

## (workshops & classes cont'd)

**JACQUI BECK** teaches a variety of Expressive Acrylic Painting workshops and is now an adjunct professor with Seattle Pacific University. Teachers can get continuing-ed credits for some of her classes. Upcoming workshops:

– Saturday, June 12th at Rainier Valley Cultural Center.

– Monday-Wednesday, July 12th to 14th at Rainier Valley Cultural Center (Continuing Education Credit available for teachers).

– Monday-Friday, July 19th to 23rd at Central Area Senior Center.

For more information: [www.jacquirebeck.com](http://www.jacquirebeck.com), [jacqui@jacquirebeck.com](mailto:jacqui@jacquirebeck.com), 206-325-7267.

.....

## LOCAL/MEMBER ART NEWS

**DONNA KOSTKA** is the featured artist at the Lake Forest Park shopping center's Starbucks at 17039 NE Bothell Way. Her watercolors on the theme "Natural Moments" will be hanging through July 7.



*Donna Kostka*

For the month of May, GALLERY NORTH presents *Trees of Spirit*, a collection of extraordinary paintings by Donna Wallace.

**JACQUI BECK** is a Featured Artist through June 13 at the COLUMBIA CITY GALLERY exhibit entitled "Dirt." Jacqui's expressive acrylic paintings in this exhibit will be from her *Tribal Suite* series. For more information: [www.jacquirebeck.com](http://www.jacquirebeck.com)



*Jacqui Beck*

**JUDY ODELL** continues showing art at The Port Gamble General Store thru June 30.

## UPCOMING EVENTS

### MAY 28-31

39th Annual Northwest Folklife Festival, 11am-11pm., Seattle Center. Visit [www.nwfolklife.org](http://www.nwfolklife.org)

### MAY 30-31

Olympic Art Festival in Quilcene, 10am-6pm., 40 Washington St./Hwy 101. Visit [www.olympicartfestival.com](http://www.olympicartfestival.com)

### JUNE 5-6

San Juan Island Artist Studio Tour; 17 studios with over 35 participants, 10am-5pm. Visit [www.sanjuanislandartists.com](http://www.sanjuanislandartists.com).

### JUNE 18-20

Edmonds Arts Festival 53rd Anniversary Year. Visit [www.edmondsartsfestival.org](http://www.edmondsartsfestival.org).

### JUNE 19

Museum of Northwest Art 18th Annual Art Auction in LaConner. Preview June 18. Visit [www.museumofnwart.org](http://www.museumofnwart.org)

### JUNE 25-27

Taste of Tacoma, Point Defiance Park, Tacoma. The ultimate family picnic features juried arts and crafts vendors. Visit [www.tasteoftacoma.com](http://www.tasteoftacoma.com).

### JUNE 26-27

Live Arts Bothell Festival: juried art exhibit, artisan booths. Cascadia/UW Bothell, 18345 Campus Way N.E., Bothell. 10am - 6pm.

## CONTACT INFO UPDATES

**VIRGINIA GREEN** has a new address in Tualatin, Oregon.

Virginia Green  
18363 SW 135th Terrace  
Tualatin, OR 97062

phone as of May 15th will be 503-610-1268

**MILDRED 'KATE' WALDMANN** has a new e-mail address: [Visagery@gmail.com](mailto:Visagery@gmail.com)



*Teresa Saia*

# NON-JURIED EXHIBITS

By Jeanie Johnson

Yes! Two paintings at the Breast Center sold. Ruth Handewith sold both paintings. There have been no sales at the Cafeteria or the Valley Breast Center to report.

The Cafeteria at NW Hospital is the next non-juried exhibit. The date for the change will be June 5. The weekend after the general meeting is Memorial Weekend and so we have pushed the date into June. Please be at the Cafeteria between 9:00-9:30am. Those who have paintings to pick up are: Keith Artz, Neko Bliler, Eva Butler, Julie Fisco, Ruth Handewith, Judith Heim, Jeanie Johnson, Lynn Kerr, Marsha Lippert, Rita and Ross Nicoll, Judy Odell, Sally Rawlings, Eunice Smith, Dot Stanton, Cecelia Venolia, Mildred Kate Waldmann.

A special thank to the helpers at the Breast Center on May 1. They are Sally and Mike Abbey, Lynn Kerr and her granddaughter (Kiana), and Eunice Smith.

At the Breast Center, we had 16 artists display 45 paintings.

When you bring paintings, check in with Eunice Smith.

Also if you are picking up paintings, you need to check out with Eunice Smith.

If you are unable to pick up your paintings, ask a buddy to do it for you. If you do not pick up, we take the painting home and will charge you \$5 for every forgotten painting. That charge will then go to the Scholarship Fund. In the past several months the Non-juried show has contributed \$25 to the Scholarship Fund.

## ADDRESSES FOR 10% DONATIONS

### NW Hospital Foundation

c/o NW Hospital, 1550 N. 115th St., Seattle, WA 98133

### The Seattle Breast Center

1560 N. 115th Suite 104, Seattle, WA 98133

### Valley Breast Center

Medical Arts Center 4033 Talbot Rd. S Suite 470  
Renton, WA 98055

## Coldwell Banker Bain gives back to Co-Arts through its Community Partnerships

When you buy or sell your home with Coldwell Banker Bain, 10% of the commission will be donated to the Co-Arts Scholarship Fund.



Contact Kathie Bliss at  
206-399-7142  
for more information  
about the program.



President: **Keith Artz**

Newsletter Editor: **Jim Farrand**

The deadline for the April issue is **June 14<sup>th</sup>**

Email Jim at **jfcreative@gmail.com**

visit our website at [www.seattlecoarts.com](http://www.seattlecoarts.com)