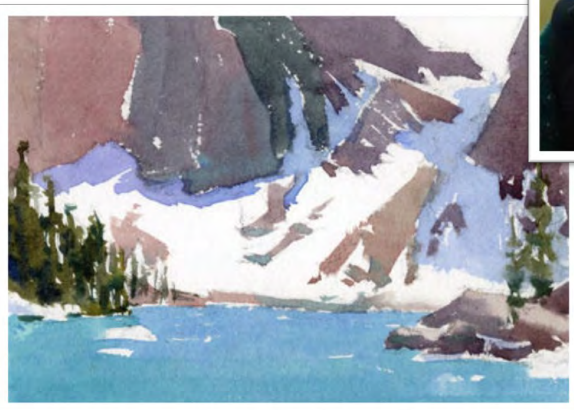




Catherine Gill's Playful Ooze A Recipe For Fun At November Demo

Catherine Gill will be this month's demonstrating artist, sharing her own exciting techniques of combining watercolor with pastels.

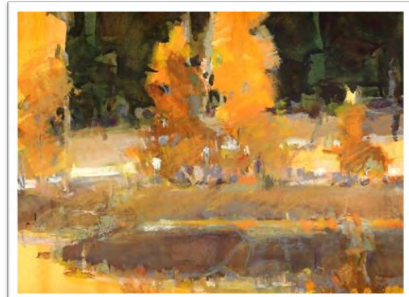
"Combining dry pastel into wet watercolor is a lively and playful way to get strong paintings. The pastel actually oozes into the wetness of the water-



color. This mixed media combines the best of both, the fluidity and transparency of watercolor and the strength and play of pastel. If you haven't had

much fun with your art supplies lately, come and watch me play with these." - Catherine Gill

Catherine Gill, the author of ***Powerful Watercolor Landscapes*** and co-founder of Art Partners International, has lived and worked in the Pacific Northwest for 30 years. She teaches both painting and printmaking at her studio in Ballard and throughout the United States, Europe, China, and Australia. Catherine paints on location in watercolor, oil, and pastel and exhibits her work regionally and throughout the world.



Catherine is a member of Northwest Watercolor Society, Women Painters of Washington, Plein Aire Painters of Washington, Seattle Co-Arts, Seattle Print Arts, Corvidae Press, and Print Arts NW. You can view her artwork at www.catherinegill.com.

Calendar

November

22 General Meeting
Catherine Gill

December

3 **Non-Juried Show Change**
Breast Center

4 **Holiday Banquet**

5 Board Meeting/Sack Lunch

January

7 **Non-Juried Show Change**
Cafeteria

9 Board Meeting

24 General Meeting

General Meeting Info Location

Ronald United Methodist Church
 17839 Aurora Ave. N
 Shoreline, WA

10:00-11:30	Library Open
10:45-11:15	Paintings accepted for POM
11:15-11:30	Vote for POM. Socialize.
11:30-12:30	Business Meeting
12:30-1:00	Clean-up. Prepare for Demo
1:00-2:15	Demonstration

Helpers: Joan Poor and Kim Caldwell
Treat Bringers: Janet Hawse, Laurie Ness, Laurel Weiss, Jean Calender and Sally Rawlings

PAINTING OF THE MONTH



**First Place - Marylyn Miller
Textures in Space**



**Second Place - Imelda Gregov
One for the Road**

**Third Place - Carol Christie
Tierra de Ensueños**



Painting of the Month entrants should put their name, the picture title, and the media on the back of the frame so that the paintings can be easily identified.

President's Message

Dear Seattle Co-Arts Members,

What a wonderful time of year. I can smell the Turkey in the air as I write this article.

I am up in Anchorage where we already have 3 feet of snow and it looks like a Winter Wonderland. Just thinking I may need to shovel one more time. I have been here for 3 days and the stuff just doesn't stop!!!! Wish you were here with me to play in the snow.

No, I wouldn't make you work!!!

HOLIDAY BANQUET: Eva has been a busy little Elf and still is looking for more members to join us at the Holiday Banquet. If you haven't signed up to enjoy the holidays with us, please give her a call. It isn't quite the season until you have been caroling with Frank and Nola; exchanging artwork with those you admire and respect; sharing the Holiday Spirit with those members at Seattle Co-Arts, our second family.

NOMINATING COMMITTEE: Our wonderful committee has selected the new Board Members and Standing Committee members. It is a wonderful group of people. Thank you one and all for coming to the call of being an active participant of these two groups that keep us all connected. You will be able to meet them at our November General Meeting. Thank you again Nominating Committee for your efforts and success.

2012 YEARBOOK: During the year, one committee is hard at work giving SCA their heart and soul to make that event the best ever. This time of year our heartfelt thanks and acknowledgement goes to Audree DeAngeles. This is the most daunting committee we have. It is like herding cats. It just doesn't require gathering the checks, contacting those we haven't heard from in a year, making sure the checks have arrived. It also means gathering all of the information pertaining to our 2012 Calendar. Have I mentioned proofreading!!!! None of us wants to see our information incorrect, and it may happen. Thank you dearest Audree for going over and beyond for us in providing the most fantastic 2012 Yearbook.

2011 PRESIDENCY: I cannot begin to tell you how grateful I am that you elected me to be your 2011 Board President. The Board Members I worked with this year were the ones that made my position so very rich and rewarding. I loved every smidge of this opportunity to support each and every one of you. I have fond memories. Did you feel like you were one of my crew members during a briefing; on time departure, on time arrival? I will treasure my recollections of this rich and rewarding year. Thank you from the bottom of my heart.

Please do not forget the next General Meeting on November 22nd. Clifford Burkey will delight you and keep the meeting in good humor. Thank you again Clifford for stepping in for me. I will be in Anchorage shoveling!!!!

If you need to contact me, please know that I am always available at KathrynFlanagan@comcast.net.

Holiday Kisses, Kathryn



Thank you kisses from inside an B777 Engine.

Holiday Banquet Sign-up

By Eva Butler



Please! Sign up for the Banquet -- you'll have great fun!

Our banquet is coming up on Dec 4th (1st Sunday in Dec.) starting at 11:00 AM. As in the past two years, it's at Niles Country Club which is at exit 175 (exit to Edmonds ferries). The address is 6601 St. SW, Montlake Terrace.

We will have our choice of salmon with crab cake or chicken with artichokes and mushrooms in a wine sauce. The cost is \$28 per meal, same as last year. For dessert we will have tiramisu.

From each artist attending we need 2-3 (or more) 4"x5" paintings (or artistic fragments of old paintings) to decorate the programs. Please bring these to the November meeting. I will also be accepting donations for door prizes and game winnings then and before the banquet. So share your crafts, card art pieces, and other gifts (sketchbooks, brushes, pencils, gift certificates etc).

Our November meeting is your last chance to sign up. Before the meeting, you may instead send your checks and 4"x5" paintings to:

Please note the following volunteers to help:

Assistant coordinator -- Carol Castaneda
Emcee -- Kim Caldwell
Photographer -- Kathryn Flanagan
Music -- Nola and Frank Allen
Poster Maker -- Lynn Kerr
Menu Composers -- Ruth Handewith (computer)
Sydnee Anderson (assembler)
Greeters (Hostesses) -- Laurie Ness, Laura Sandstrom, Sally Rawlins, Paula Parks

Eva Butler

1548 17th Ave E

Seattle, WA 98112

Please, you must let me know whether you'd like salmon or chicken.

Thank you,

Eva Butler (206) 325-4676 or (206) 931-2021

Membership News

By Laurie Ness, Membership Chair

From January of this year, our Co-Arts community has become enriched by additional artists who have joined as "Members" and "Juried Members." Those who have become "Members" are Pat Hardy, Faye Hayes, Wendy Johnston, Trish Murphy, Helen Todd, and Jan Trowbridge. Others who took the next step to become "Juried Members" include, Beth Betker, Carol Castaneda, Tis Huberth, Do Jones, Lyn Linder, and Lauriel Sandstrom. We are impressed by their talent and energy. And, as I mentioned in last month's Newsletter, some of these wonderful people have stepped up to volunteer! We are a stronger organization with their participation. Our thanks to you all!

This has been a good year for Co-Arts. I have enjoyed being your Membership Chair. For me, it just feels downright good to be in this cordial and supportive art organization. Now I welcome Joan Glenn who will be your next Membership Chair.

Mixed Media Experimenting in Lisa Snow Lady Fall Workshop

By Delorse Lovelady

The Co-Arts 2 day Fall Workshop in November provided a wonderful playground for acrylic and mixed media experimenting for 12 members who attended. Everyone was very productive as it seemed everyone had 3 or 4 pieces by the end of the second day. We enjoyed sharing and admiring our work and receiving support-



ive constructive suggestions for our experimental art pieces.



Lisa Snow Lady was a knowledgeable and delightful presence who guided us through her methods for mono-printing on cradle board, Masonite and canvas. She shared various techniques she uses in her paintings such as stamping, enhancing with gold, and negative painting. It was surprising to watch Lisa develop a visually satisfying painting by using a large board she had used to do a variety of demo's during the class. She demonstrated how you can take random markings made on 1 large surface from the demo's and unify them into a well composed painting with balanced colors and lines using her techniques.



Thanks go to Lisa Snow Lady for sharing her artistic talents and beautiful paintings with us. And a big thank you to numerous class members who helped with the room set up and clean up, some of the treats, and to Judith Silverman for making the coffee and tea each day! Everyone contributed to making the class successful and fun!

2012 Spring and Fall Workshops - Mark Your Calendars!

Workshop teachers and dates have been confirmed for 2012 and are in the planning process. Mark your calendars to save these dates and plan to attend. The tuition for each 2 day workshop will be \$100 for members and \$125 for non-members. Class sizes are limited and a deposit of \$50 holds a definite spot for you.

March 5-6 Lois Lord, a very talented and award winning artist and Co-Arts member will be teaching a mixed media and collage workshop sharing her techniques for her abstracted style of paintings. Sign-ups begin at the November 22 general meeting where a \$50 deposit will reserve your spot. This class is expected to fill quickly. Lois gave a great demo for us last year at our February meeting – you can read about it here: <http://seattlecoarts.com/newsletter/2011/feb-2011.pdf>.

Nov 5-6 Bev Jozwiak, a wonderful nationally recognized artist will be teaching a fast paced expressive watercolor class. She emphasizes the use of emotions in her paintings and believes in not over-thinking the painting process. Bev gave a super demo for us last year at our April general meeting – she worked so fast – she completed two paintings, a portrait and a rooster! Read more about her here in our newsletter: <http://seattlecoarts.com/newsletter/2011/apr-2011.pdf>. Sign up will begin later next year.

Eye of the Artist 2012 Juried Show

Updates & Reminders

By Joan Poor, Chairperson

Committees:

Thank You! Thank You! To Beth Betker for joining our team of Committee Members for our 2012 Juried Show. Beth will be Co-Chair for the **Eye of the Artist**. (In addition, Beth assists Coralynn Jones with Non-Juried Exhibits .) As one of our newest Co-Arts Juried Members, we extend our congratulations and our thanks for being involved in our community.

Thank You! Thank You! To Judy Odell for again signing on for Publicity for the 2012 Show. Judy brings wonderful and fresh ideas to promote our shows and is a most welcome complement to our cast of Committee Members.

Still Looking! For a Co-Artist for Graphics. This Committee position designs the Postcards, Programs, and Poster for our event. This is an essential, computer-savvy role. ***Please let me know if this speaks to you.***

Sign In:

Please remember to sign in at the general meetings. Members exhibiting at the show must have attended at least three meetings in this calendar year. The **December Banquet** qualifies as a meeting for this purpose, as does the **Summer Picnic**.

Calendar of Show:

The calendar of dates pertinent to the 2012 Juried Show is posted below:

Sunday, January 15	Opening for Entries
Sunday, February 5	Deadline for Art to be considered for Postcards
Friday, March 2	Entry Deadline
Friday, March 16	Digital file to Juror
Monday, April 2	Acceptance Notifications
Monday, April 30	Delivery of Paintings
Tuesday, May 1	Hanging of Paintings
Wednesday, May 2	Review and Award Selection by Juror
Saturday, May 12	Afternoon Reception
Friday, June 1	Take-down of Show



**Happy Holidays, Everyone,
And
Happy Painting!**



NON-JURIED SHOW NEWS

By Coralynn Jones

Thank you to all the volunteers who helped hang the show in the Cafeteria: Kate Waldmann, Beth Betker, Jeanie Johnson, Lynn Kerr and Lyn Linder.

Really appreciate all the help; you make it quick and easy!!

Our next change is in the Northwest Hospital Breast Center on Saturday, December 3rd. Artists who have work to pick up are:

Betty Bartlett, Clifford Burkey, Eva Butler, Kim Caldwell, Helen Drummond, Ruth Handewith, Midori Hoser, Do Jones, Lynn Kerr, and Mildred Waldmann. Remember to have your buddy pick up for you if you can't. There is a \$5 fee for any pieces left behind.

We are there at 8:30 a.m. and new artists who wish to hang should bring their work no later than 9:30. Beth Betker is the new coordinator for the Breast Center and she will be checking your pieces for quality framing.

A 10% commission fee is paid to the hospital by the artist who sells a painting. This commission goes directly to the Breast Center or to the Cafeteria. Call me for more information.

The Breast Center has a hallway good for hanging smaller paintings that don't need to be seen from a distance. If anyone wants to bring smaller size paintings (i.e., 11 x 14 or so) to the General Meeting I can transport them for you. Registration sheets and hang tags will be available at the meeting for you to fill out.

Looking forward to seeing fresh art to hang in our non-juried shows....

Coralynn

Non-Juried Show Calendar

Change-Out Dates

December 3	Breast Center
Jan 7, 2012	Cafeteria

Library Notes

By Betty Bartlett

This is a good month to check books and DVD's out of the Library because you will be able to enjoy them over the holidays.

Also, if you're looking for something special, we have a listing of all of the books and DVDs that are in the Library.

Please return books: **Do Jones**, "Half Hour Painter," "Changing Season Pastel," "Yoga of Drawing," "Oil Painting on Paper;" **Lynn Kerr**, "Acrylic Watercolor," "Watercolor Figure;" **Beth Betler**, "Splash 12," "Art Calendar Nov. 2008;" **Trish Murphy**, "Painting Figures in Watercolor, Part 112," "Dramatic Watercolor Painting;" **Richard Schulz**, "Watercolor Composition Made Easy;" **Jeanne Hedington**, "Drawing and Sketching," "Drawing on the Right Side of the Brain;" and _____, "Watercolor Techniques, Watercolor and Gouache," "Watercolorist's Complete Guide to Color;" and **Betty Bartlett**, "Splash 6."

Don't Forget—We Open at 10 a.m.

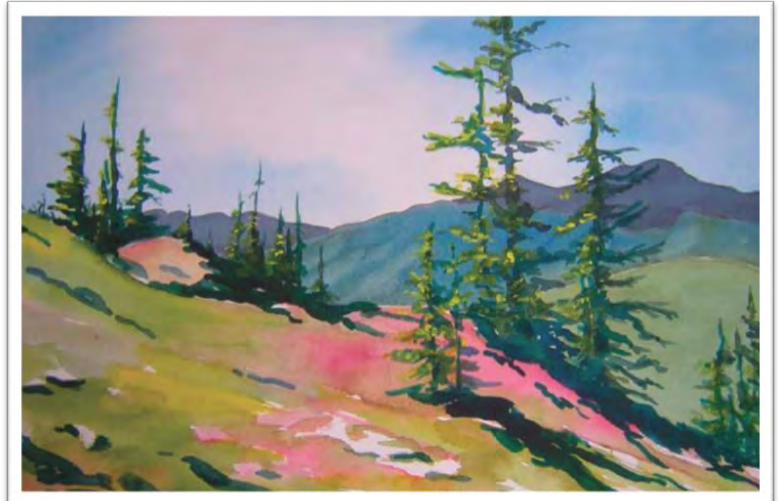


Seattle Co-Arts Members Hit the Trail

By Janet Hawse

Cecile Disenhouse and **Sally Rawlings** are featured in the December issue of *Washington Trail Magazine*. In the article written by Joan Burton, four landscape artists are interviewed about their encounters with nature and how they translate those experiences into paintings.

Cecile Disenhouse, an avid hiker, naturalist, and watercolor artist, describes her passion for landscape painting by saying, "To really see a landscape, you've got to paint it."



Baker River (above) and Park Butte (below left) by Cecile Disenhouse



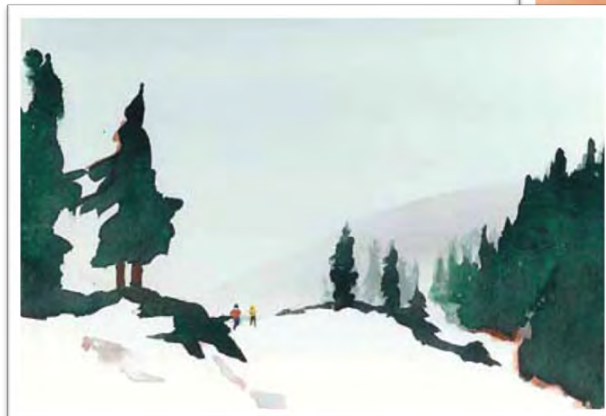
Cecile hikes regularly with her husband, Dave Jettes, sometimes called Mountain Man Dave. Taking her painting equipment with her, she doesn't have to wait for inspiration before starting a painting..."The inspiration comes from being in those wild landscape settings."

Watercolor artist **Sally Rawlings** enjoys everything that is outdoors. Sally hikes, sails, and enjoys the natural scenery

where ever an adventure takes her. In tow are her watercolor pad, paints, brushes, and camera to help her capture the experience. Like many artists, Sally uses the camera to capture a reference of the light, but realizes that a photo cannot tell the whole story. "A painting can have special effects a photo can't convey," she says, "and at the same time a painting can add a feeling that might not be obvious to other viewers of the same scene."

Congratulations to Cecile and Sally.

To read more from Joan Burton's article, please go to: http://www.wta.org/magazine/WTNov-Dec2011_Feat-Painters.pdf.



Simply Snowy (left) and Ebey's Amber (above) by Sally Rawlings

WORKSHOPS, EVENTS, AND OTHER NEWS



Helen Drummond is in the following venues for the Holiday season.

EAFa Gallery – 36th Annual Juried Open Exhibition, Nov. 8 – Jan. 5 at the Seattle Design Center, 5701 Sixth Ave South, Plaza Bldg / Suite P292, Seattle, WA, Monday-Friday 9:00 a.m. to 5:00 p.m.

Kaewyn Fine Art Gallery Small Works Show, Dec. 2 – Jan. 25 at 10101 Main Street, Bothell, WA, Gallery hours: Tuesday - Saturday 10:00 a.m. to 6:00 p.m.

Helen will have 4 small paintings in this show.



Kim Caldwell and Janet Hawse will be the featured artists in December at **Gallery North** in an extraordinary show titled **Mixed Exposure**. The Artists' Reception on Saturday, December 10th from 1:00-4:00 p.m. The exhibition will include a collection of exceptional landscape watercolor paintings by Kim and a variety of exquisite lampwork bead and sterling silver jewelry by Janet. Gallery North is located at 508 Main Street in Edmonds, WA. Hours: Monday-Friday 11:00 a.m. to 7:00 p.m., Saturday 10:00 a.m. to 7:00 p.m., Sundays Noon to 6:00 p.m.



Ecatherine Gill invites you to join her at **Art On Tap** on the first 3 Mondays of every month at The Pub at Third Place in the Ravenna area of Seattle. Look for the table where artists are drinking and drawing.

Go to: www.vioscafe.com/viospub.html for directions.

Coralynn Jones' October Demo Inspires Audience

Coralynn Jones treated Seattle Co-Arts members to a fun and inspiring presentation in October. Coralynn demonstrated many of her unique watercolor techniques and kept the audience engaged as she poured and pushed color across paper, creating some beautiful effects. Thanks, Coralynn, for a wonderful demonstration.



Fundamentals of Oil Painting Without Solvents *A Painterly Approach*

Explore the luscious, irresistible magic of oil painting with prize-winning painter **Steve Whitney**. If you already paint in oil, this class can help you review and apply what you already know and provide ongoing support and guidance as your work continues to grow. If you are experienced in other media but new to oil, this course will provide fundamental technical information to get you started and individual help in applying existing painting skills to your exciting new medium. All without the use of toxic solvents!



Current Class (limited space available): Fridays 10am to 1pm, beginning January 6, 2012

New Class (enrollment open): Mondays 1:30pm to 4:30pm, beginning January 9, 2012

Where: Eastside Artist's Collaborative, 12650 Northup Way, Suite 201, Bellevue, WA 98005

Tuition: \$25 per session payable month by month

Deposit: \$25 to reserve a space, payable to Steve Whitney Arts and Letters, 17413 113th Ave. NE, Bothell, WA 98011

Prerequisite: Basic drawing and painting skills in any medium

For more information or to reserve your space, please email steve@stevewhitney.com or call Steve at 425-485-6446.

To view Steve's paintings, visit his Web site www.stevewhitney.com.

2012 Seattle Co-Arts Officers and Chairpersons

President	Martha Price
Programs	Judith Heim
Yearbook	Dot Burton
Secretary	Helen Drummond
Treasurer	JoAnn Amundson
Membership	Joan Glenn
Juried Show	Joan Poor
Newsletter	Imelda Gregov
Non-juried Shows	Coralynn Jones
Parliamentarian	Kathryn Flanagan
Audio Setup	Eva Butler
Awards Juried Show	Lynn Kerr
Banquet	Eva Butler
Historian	Sharon Hines-Pinon
Hospitality	Judith Silverman
Library	Do Jones
POM	Clifford Burkey and Sally Rawlings
Publicity Juried Show	Judy Odell
Scholarship	Janet Hawse
Sunshine	Jane Becker
Telephone	Current Board President
Website	Sandra Kahler
Spring/Fall Workshops	Delorse Lovelady
June Workshop	Ginny Guest
Fall Workshop	Kim Caldwell

A Note From the Editor

Thank you for all your kind support during this past year. It has been a lot of fun doing this newsletter, I have met so many new friends, and I have found myself surrounded by inspiring artists. It doesn't get any better! –Janet Hawse

Seattle Co-Arts President: Kathryn Flanagan

Current Newsletter Editor: Janet Hawse

2012 Newsletter Editor: Imelda Gregov

Deadline for January Issue:

Friday, January 14, 2012

PLEASE SUPPORT OUR SHOW SPONSORS

Autumn's Framing and Gallery • 537 Main St, Edmonds, WA 98020 (425) 778-5150

ADG Printing.com • 19231 36th Avenue W, Lynnwood, WA 98036 (425) 771-7603

Art & Soul Photography • 2860 Northwest @Market St, Seattle, WA 98107 (206) 297-1223

Artist & Craftsman • 4350 8th Ave NE, Seattle WA 98105 (206) 545-0091

Cheap Joe's Art Stuff • www.cheapjoes.com

Dakota Art Store • 6110 Roosevelt Way NE, Seattle WA (206) 523-4830

Digital Canvas Northwest • 3003 S Lake Crabapple Rd, Marysville, WA 98271 (206) 550-2510

EAFA • Eastside Association of Fine Arts, www.eafa.org

FrameWright & Kaewyn Gallery • 10101 Main St., Bothell, WA 98011 (425) 483-7385

Unique Art Framing • 3429 Airport Way S, Seattle, WA 98134 (206) 447-9441

University Bookstore • 4326 University Way NE, Seattle, WA (206) 634-3400

Addresses for 10% Donations

NW Hospital Foundation c/o NW Hospital, 1550 N. 115th St., Seattle, WA 98133

The Seattle Breast Center 1560 N. 115th Suite 104, Seattle, WA 98133

Valley Breast Center Medical Arts Center 4033 Talbot Rd. S Suite 470, Renton, WA 98055

Coldwell Banker Bain gives back to Co-Arts through its Community Partnerships

When you buy or sell your home with Coldwell Banker Bain, 10% of the commission will be donated to the Co-Arts Scholarship Fund.

Contact Kathie Bliss at 206-399-7142 for more information about the program.



Seattle Co-Arts
c/o JR Hawse
17414 Valley Circle Drive
Bothell, WA 98012