

**JANUARY
24TH
JENNIFER
BOWMAN
*ACRYLIC***



Jennifer is a third generation artist. She is known for her bold, vibrant color palettes. She was the creator of both the Skagit valley Tulip Festival poster and the Edmond Arts Festival poster in 2004. Her work graced the cover of the Eddie Bauer 2010 Summer catalog. She shows in several galleries throughout the United States. We are fortunate to have her as this month's demonstrating artist. She will also be the instructor for the June Workshop at Samish.

"After spending nearly two years aboard a sailboat and cruising the West Coast, I really came to appreciate the quality of light and how different latitudes could affect the way I see a subject. My favorite experience revolves around capturing warm reflected light on bougainvillea-draped buildings in Mexico. That same investigation of how light plays off of an item is what galvanizes me into painting a subject. It doesn't matter if it is a ferryboat, a bouquet of flowers or an abstract."

CALENDAR

JANUARY

24 GENERAL MEETING
Jennifer Bowman

FEBRUARY

28 GENERAL MEETING
Barbara Noonan

MARCH

27 GENERAL MEETING
Pamela Harold

**General Meeting Info
Location**

Ronald United Methodist Church
17839 Aurora Ave.N Shoreline, WA

| | |
|-----------------|---|
| 10:00-11:30 | Library Open |
| 10:45-11:15 | Paintings accepted for POM |
| 11:15-11:30 | vote for POM/socialize |
| 11:30-12:30 | Business Meeting |
| 12:30-1:00 | Clean-up. Prepare for Demo |
| 1:00-2:15 | Demonstration |
| <u>HELPERS:</u> | Sidnee Anderson, Denise Crie |
| <u>TREATS:</u> | Judith Heim, Brenda Hall, Helen Todd, Midori Hoser Bet Betger |



January's Message from the President

Happy New Year from this year's Seattle Co-Arts Board! As the new president, I had the privilege of meeting all the board members at our first session on January 9 at Kathryn Flannagan's home. She is so organized and personable, she will be a hard act to follow, so I'm counting on your support. Thanks in advance!

Here is a summary of what we discussed and the activities that are well underway for 2012!

JoAnn Amundson continues from 2011 as our Treasurer and presented us with an updated budget for the year as well as a status of SCA's balances. At this time, the 2012 budget has little variation from 2011 and no significant expenditures are on the horizon.

Dotti Burton and Richard Schulz are taking charge of the Yearbook. The 2012 edition will be available at the January 24, 2012 SCA Monthly Meeting for members to pick up. Last year a process was approved to make sure that Yearbook changes during the year are kept up to date, and this will help with ongoing editing and compilation of the 2013 Yearbook. This means Dotti and Richard will be in communication with Membership, Yearbook, President, Kim/Membership Email, and Newsletter. SCA members rely on this Yearbook to be complete and accurate, so thanks to Dotti and Richard for coordinating this work.

Joan Glen is overseeing Membership this year, and reports that she is all set to go to meet and greet us at the SCA Monthly Meeting, and provide answers to any questions about SCA membership. She also reminded us that the jurying for members who want to become "Juried Members" will occur in April and October, so check the Newsletter for dates and "how to" information.

Coralynn Jones continues to keep the Non-Juried Shows running at Northwest Hospital Breast Center and Cafeteria moving forward. This is a wonderful opportunity SCA provides for juried members to show and sell their work.

Joan Poor For the Annual Juried Show at the Art Institute of Seattle, has been hard at work, and all of you should have received an email about how to make an entry application into this year's show. There will be hard copies of the submission guidelines at the January 24th meeting. Submissions will be accepted starting January 15 until March 2, so get painting!

President's message cont.

Judith Himes (Programs) is coordinating the SCA Monthly Meeting demonstrations and has some terrific artists lined up for us. She has also suggested SCA think about acquiring the capability of computer and LCD projector so that demonstrations could be expanded beyond the current format – example, a demonstrator could show steps of a process on the Power Point slides, as well as an actual hands-on demo.

Demo Schedule for 2012

I am excited to announce that we have a great line up of presenters for 2012! I just took this job over from Clifford Burkey who has, metaphorically speaking, very large shoes to fill! I have tried to put together a variety of programs that span different mediums, styles, and artists subject matters. Some will be traditional demos, some will be power point presentations (slide shows) which will allow the artist to walk us through their studios, their inspirations and a wider range of their techniques. I hope you will enjoy! Happy New Year everyone!

Judith Heim, Programs chairman

| | | | |
|-----------|----------------------------|------------|--------------------------------------|
| January: | Jennifer Bowman (acrylic) | May: | TBA |
| February: | Barbara Noonan (pastel) | June: | TBA |
| March: | Pamela Harold (watercolor) | September: | Beth Betker (oil) |
| April: | Donna Leavitt (graphite) | October : | Katherine Steiger (collage) |
| | | November: | Susanne Werner (abstract acrylic) |



**BARBARA NOONAN
COMING IN
FEBRUARY!**

February 28th Barbara Noonan, Pastel
Barbara will demonstrate her masterful use of soft color and light in her chosen medium of Pastel.

She is currently a Seattle artist and has her studio "Mornin, Noonan, Night" in the Tashiro Kaplan Building In Pioneer Square. She started her adventures in art several years ago while living in Tahiti, the islands and remote parts of Alaska. She does both representational and abstract pieces.

She Shows her work at Arts West and Women Painters of Washington Galleries in Seattle among others. She won best of show in the 2010 Plein Air Painters US Open Show, sponsored by Pacific Northwest Art School. Check out her Website at: www.morninnooannight.com you can also just google Barbara Noonan, art and that will get you there as well.



Rudolph the Red Nose Reindeer Would Have Had a Happy Time

The annual winter holiday banquet was a joyful bash. On arrival, all who came were assigned an alter identity which was stuck on their backs where they could not see them (my husband was the Eiffel Tower). Others gave clues to each person as to their identity. Alas! Everyone guessed eventually who they were, so we had to hand out the booby prizes (boxes of Frangos) as door prizes. We had a smart crowd!

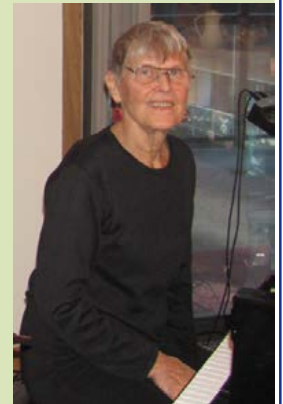


The fountain dribbling punch was a little late. So instead, many of us took the opportunity to sip a little vino before the salad. Then Kathryn introduced us to our new board members and committee chairs, and we said goodbye and thank you to last years' volunteers.



Tasty choices of chicken in wine sauce and salmon with crab cakes sobered us imbibers up, but not too much! Just enough for us to belt out rollicking winter holiday songs with Nola and Frank's instrumental accompaniment keeping us near key. Then the tiramisu! It was heaven (-but not for our hips)!

We received a tremendous number of gifts for door prizes, many of which were beautiful hand creations generously donated from the heart to our fellow friends.



The banquet was a success (as you know if you were there). If you didn't come, I am sorry you missed it. Maybe next year.

I'd like to thank all those that volunteered and made it a happy and successful event by pitching in to help: Kim C., Lynn K., Kathryn, Frank and Nola, Jane B., Sidnee A., Ruth H., Sally K., Laurie N., Paula P., and Carol Castaneda. Without volunteers none of our events would happen. You all not only made it happen, but made it a wonderful success. Special kudos and thanks to Frank and Nola who have been volunteering year after year after year to accompany our holiday singing and keep us "near" key. Year after year...what dedication!

I'm looking forward to next year's suggestion is appreciated. Thank

Eva Butler
(206) 325-4676



banquet...Any you!



announcements and workshops

YEAR BOOK

!!! It's here!!!

The new, updated and beautiful 2012 Yearbook is hot off the press! Pick yours up at the General Meeting on January 24th or February 28th.

Doti Burton

Notice to all members

Our club is a member of the Alliance Program of the AMERICAN FRAME shop in Maumee, Ohio. In the past they gave a discount in the form of a rebate to the club. Last quarter we received \$31.19.

They have decided to change this system.

*They are now giving a 5% discount on any orders from our members. To receive this discount, the code **ALLIANCE12_5%** will need to be used at the time of the order.*

If you do not know about AMERICAN FRAME or want a catalog, their website is

www.Americanframe.com.

Joan Amundson

POM winners for November will be in the January letter.

PLEIN AIRE !!



"Plein Aire or en Situ, Co Arts will be getting out into the bushes to paint this summer. Whether you will be joining us or not, where shall we paint.?? January meeting Lynn Kerr will be bringing a sign up sheet and idea sheet for the places. At this time, figure on Wednesdays 9:30 till 1:00 or so with a little discussion time with lunch. We will be trying to offer times and places for EAFA and NWSW as well. Criteria: easy to pack your stuff into, easy hill and dales, a potty for us and things of beauty and or interest. At this time, planning for the Middle of June to begin. There is a Plein Aire Show planned for this fall. So... put on the sunshine side of your brain and let us know that you are looking forward to joining us and you have "such a place!"

A Call To Artists

**Gallery North
2012
Annual Miniature &
Small Painting
Show**



Exhibition: March 1st - March 31st

Gallery North invites you to be part of our 2012 Annual Miniature and Small Paintings Show which runs from March 1st to March 31st. This will be an exciting event for all participating artists with an outstanding juror, Kathy Collins, for awards and prizes. Entries should be delivered to Gallery North on Saturday, February 25th or Sunday, February 26th during business hours. All entries meeting the criteria in the prospectus will be hung in the gallery (as space allows). We will be hosting an artists' reception honoring our show participants on Sunday, March 4th, and also invite the artists to attend the Edmonds Art Walk event on March 15th. *We hope that you will join us for this special exhibition. To get your prospectus and entry form, please go to www.gallery-north.com or drop by the gallery.*

NON JURIED SHOW CHANGES

The Non-juried show will be changed in the **Northwest Hospital Cafeteria on Januray 28**. We will arrive at 8:30 am and begin taking paintings down. Please have new paintings to be hung there by nine AM.

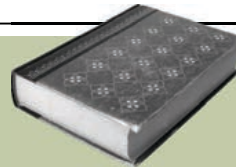
Artists who need to pick up work are: Nola Allen, Jo Ann Amundson, Betty Bartlett, Jane Becker, Beth Betker, Clifford Burkey, Carol Castaneda, Ruth Handewith, Jeanie Johnson, Coralynn Jones, Lynn Kerr, Lyn Linder, Marsha Lippert, Delores Lovelady, Marylyn Miller, Lauriel Sanstrom and Kate Waldmann.

Remember, there is a \$5 fee for paintings not picked up by you or your buddy that goes to the scholarship fund. Also, a 10% commission fee goes to Cafeteria or Breast Center where your painting was hanging if your art is sold. Call me if you need an address.

Paintings must be professionally ready to hang, clean and undamaged and may be rejected if they are not. The cafeteria is a wide open space, great for viewing art. But smaller pieces are at risk of being taken off the walls...

I will be at the General Meeting with Inventory sheets, hang tags and the clipboard for signing up. Thanks to all who participate in these shows. It is a pleasure to see your work in public places!!!

Coralynn Jones



LIBRARY

List of items due at the library:

Kate Waldman - The Process (DVD), Value Hue and Intensity (DVD), Half Hour Painter, Yoga of Drawing, Painting & More.
Joan Poor -Watercolor (M), Watercolor Magazine (M)
Betty Bartlett - Spalsh 2
Ginni Guest - Debunking the Mythe of Talent (DVD)
Lois Lord - Splash 12, Painting with a Fresh Eye
Trish Murphy - A Portrait in Watercolor (V), Finding Direction in your painting (V), Painting Little Landscapes, Paint from Sketch, Painting Figures and Animals
Judith Silverman - Learn Classic Oil Painting (VHS)
Coralynn Jones - Margaret Webb books
Lynn Kerr - Acrylic Techniques (DVD), Watercolor Action (DVD)
Win Bainbridge - Powerful Watercolor Landscapes
Alice Owen - Splash 6
Sally Rawlings - Watercolor Landscapes (VHS)
Mary Dickens - Makiing Color Sing
Bev McDonald - Acrylic as Water Media (VHS)
Jeanne Hedington - Drawing on the Right Side of the Brain, Drawing and Sketching
Lauriel Sandstrom - Water Media Techniques (VHS), Watercolorists Complete Guide to Color
Susan Albright - 100 Keys Great Acrylic Painting
Wendy Johnston - Making Watercolors Glow (DVD)

Do Jones

Workshops



JACQUI BECK

Workshop Information [see my website: www.jacquirebeck.com for more info]:

Saturday February 25th Expressive Acrylic & Mixed Media Painting [\$95] 10:00 – 4:00, Dakota Art Store, Bellingham 1415 Cornwall Avenue, Bellingham WA 98225, To register: 360-676-8918, \$85; <http://www.dakotaartstore.com/bellingham.html>

Wednesday March 7th Expressive Acrylic & Mixed Media Painting [\$95] 9:30 – 3:30, Anacortes Senior Center, 1701 22nd Street, Anacortes WA 98221. To register: [Dee Doyle: (360) 630-0208; deecubed@aol.com

Thursday March 8th Expressive Acrylic & Mixed Media Painting [\$95] 9:30 – 3:30, Burlington Senior Center, 1101 Greenleaf Avenue, Burlington WA 98233. To register: [Dee Doyle: (360) 630-0208; deecubed@aol.com

Saturday March 24, Stretching Toward Abstraction [\$85] (all mediums welcome; no solvents with oils) [\$85], Daniel Smith (Seattle) 10:00 – 4:00 [to register: 206-223-9599

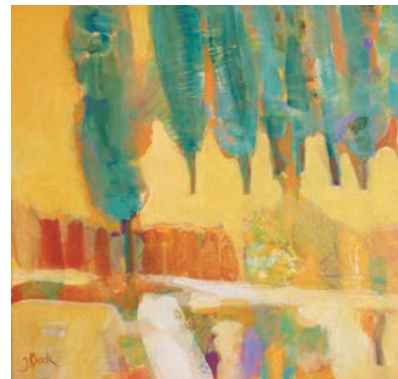
Jacqui Beck

Artist

206-325-7267

jacqui@jacquirebeck.com

www.jacquirebeck.com

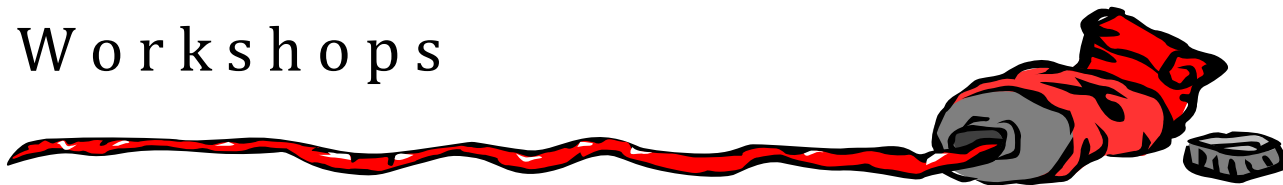


Kathy Collins will demonstrate her technique for high-contrast impressionistic watercolors at the Northwest Watercolor Society meeting

Tuesday, Jan. 24, 2012, 6:45PM, at St. Andrews Church, 2650 148th Ave SE, Bellevue. Preview Kathy's work at

www.kathycollinswatercolors.com

Workshops



Lois Lord

March 2012 Spring Workshop with - Time to Sign Up!

On March 5-6 talented Co-Arts member, Lois Lord, will be teaching a mixed media and collage workshop sharing her techniques for her abstracted style of paintings. The class will include demonstrations of hand-stained tissue, rice, and various other multimedia papers. Lois will provide instruction in blocking in figurative, abstract shapes over a non-objective, mixed media foundation by using various techniques, including, stamping, imbedding, using prepared collage papers. She will share her insights about color and composition and painting styles.

Lois attended the University of Washington, Whitman College, Walla-Walla, and Green River Community College. Honors include EWWS-Signature Status and numerous awards by the Peninsula Arts League, EAFA, NWS and NWPS. Lois' painting "For New Orleans" was selected as a fundraiser for Victims of Hurricane Katrina by Seattle Co-Arts and "The Entertainer" was selected for Co-Arts 2010 Margaret Mattocks Memorial Award. She is also a member of the NW Collage Society. Her paintings hang in the city permanent collections in both Auburn and Tukwila.

Sign-up and a deposit or payment is now being accepted. The tuition for the 2 day workshop (9:30am-3:30pm) is \$100 for members and \$125 for non-members. Class size is limited, but a deposit of \$50 holds a definite spot for you. Lois's class is expected to fill quickly, as it promises to be a fun filled class with lots of exciting techniques to try. Contact the Workshop Chair to sign up: Delorse Lovelady at



*Creativity is
allowing yourself to
make mistakes. Art
is knowing which
ones to keep. —
Scott Adams*

SHOWS

CECELIA VENOLIA

has been accepted as a member into Seagrass Gallery, Camano Island. Her painting "Echoes of Yesteryears" is a depiction of the fishing resort at Cama Beach in the 1930s.



MARIANNE HARLOR

Marianne will be half of a 2 person show at the Auburn City Hall for the month of February, 2012

TIS HUBERTH

is showing her work at the Federal Way City Hall from Jan. 13 to Mar 7th. For directions contact Tis either by e-mail or phone at 253-839-5623

JUDITH HEIM

Exit Winter
Gallery 114

1100 Glisan St Portland, Oregon
Opening Reception: Jan 5, 6-9p.m.
I have two paintings in this show:
"Cascades Equinox" &
"Frozen Lotus Pond"

EAFA 2012 Abstract Show
Seattle Design Center
5701 Sixth Ave. S. Seattle, WA
January 10-February 24
Opening event: Jan 19, 5-8 p.m.

"NOCTURNE"



CHARLISE BUTLER



PRETTY AS A FLOWER-Local artist Charlise Butler stood in front of some of her paintings at a reception held in her honor on Friday, Jan 6 at the Pahrump Community Library . Her paintings will be on display until March 16.

SEATTLE COARTS PRESIDENT:
Martha Price

NEWSLETTER EDITOR: Imelda Gregov

Deadline for February Issue:
February 15

Email: Imelda at
mimi42@mac.com



Imelda Gregov is taking on the Newsletter for 2012 and we want to be sure to make her work flow as smoothly as possible. She is doing this virtually (out of town) and she needs a couple of hawk-eyed proofreaders. The member who signed up for the task is unable to do it due to family illness, so we will be looking for a couple of you to read it over for grammar and typo's and to be certain the info is clear.

Thanks to this board and those who lead the many other necessary work committees that keep SCA strong and fun for all of us.

Colorfully yours,

Martha Price

PLEASE SUPPORT OUR SHOW SPONSORS

Autumn's Framing and Gallery • 537 Main St, Edmonds, WA 98020 (425) 778-5150

ADG Printing.com • 19231 36th Avenue W, Lynnwood, WA 98036

Art & Soul Photography • 2860 Northwest Market St, Seattle, WA 98107 (206) 297-1223

Artist & Craftsman • 4350 8th Ave NE, Seattle WA 98105 (206) 545-0091

Cheap Joe's Art Stuff • www.cheapjoes.com

Dakota Art Store • 6110 Roosevelt Way NE, Seattle WA (206) 523-4830

Digital Canvas Northwest • 3003 S Lake Crabapple Rd, Marysville, WA 98271 (206) 550-2510

Eafa • Eastside Association of Fine Arts, www.eafa.org

FrameWright & Kaewyn Gallery • 10101 Main St., Bothell, WA 98011 (425) 483-7385

Unique Art Framing • 3429 Airport Way S, Seattle, WA 98134

University Bookstore • 4326 University Way NE, Seattle, WA (206) 634-3400

ADDRESS FOR %10 DONATIONS

NW Hospital Foundation c/o NW Hospital, 1550 N. 115th St., Seattle, WA 98133

The Seattle Breast Center 1560 N. 115th Suite 104, Seattle, WA 98133

Valley Breast Center Medical Arts Center 4033 Talbot Rd. S Suite 470, Renton, WA 98055

Coldwell Banker Bain gives back to Co-Arts through its Community Partnerships

When you buy or sell your home with Coldwell **Banker Bain**, **10% of the commission** will be donated to the Co-Arts Scholar- ship Fund. Contact Kathie Bliss at 206-399-7142 for more information about the program.

SEATTLE
CO ~ARTS



SEATTLE
COARTS

c/o Imelda Gregov
37851 Los Cocos W
Rancho Mirage, CA
92270

The Eye of the Artist 2012

Prospectus

Seattle Co-Arts 62nd Annual Juried Show, May 1-31, 2012

Joan Poor, Chair

Eligibility

All juried members of Seattle Co-Arts in good standing who have attended at least 3 meetings in the last 12 months as of and including the January 2012 general meeting are eligible to enter the 2012 juried show. The Summer Picnic and the December Banquet also qualify as meetings for eligibility purposes. The show chair is ineligible to receive awards. Any painting accepted and shown in a previous Annual Seattle Co-Arts juried show is not eligible for entry into the 2012 show.

For complete information, entry forms, labels, Guidelines for digital image preparation, etc. please go to our website: www.seattlecoarts.com where you will be able to download all information including an application. For those members that do not have that ability, we will have hard copies at the meeting. You may also contact Joan Poor at PaperBoats@aol.com if you miss the meeting—she will mail it to you.

Specifications

Each artist is allowed to enter 2 digital images. No more than 2 paintings will be juried into the show per artist. All entries must be the original work of the entering artist, executed without the supervision of an instructor, not based on any copy-righted material and completed within the last 2 years. All painting/drawing/collage mediums are acceptable. All art must be 2-dimensional and wall hung, framed or gallery wrapped and ready to hang with adequate wire (no saw tooth hangers). No nudes please.

The total outside (including frame) dimensions may not exceed 40" x 40". The minimum acceptable size is 14" x 16" (including frame.) All digital images will be kept on file with the show committee until paintings are delivered to the venue. All paintings must be exactly as they appear on your digital entry. No substitutions will be accepted.

Digital Entry Submissions

Seattle Co-Arts will accept only digital entry submissions. Sally Rawlings will be handling the digital image catalog for the 2012 show. Thank you, Sally! *Submissions are to be sent via e-mail only to Sally Rawlings at SeattleCoArts2012@gmail.com.* Please note that this email address is dedicated only for this show and may not be effective after the catalog is closed.

Digital images must be in jpeg format. Jpegs must be 300 dpi resolution, 1800 pixels max on the longest side. Jpegs must be labeled in the title bar as follows: Last name, first name, title, size of painting. Images must be cropped to exclude matting, frame, or any other extraneous visual information.

For those that are MAILING in their forms: Mail to:

[Beth Betker, P.O. Box 75555, Seattle, WA 98175-0555](mailto:BethBetker@seattlecoarts.com)

Entry Fee and Form

The entry fee is \$15.00 for two digital images of 2 paintings. Payment should be made by check payable to Seattle Co-Arts. Mail your check and entry form to Sally Rawlings. Please check your Co-Arts directory for Sally's address or email Sally at SeattleCoArts2012@gmail.com. Information on the entry form must correspond with the information on jpegs that you are e-mailing to Sally. See page 3 of prospectus for entry form.

Venue

Seattle Co-Arts will hold the 2012 Juried Show at the Burnley Gallery at the Art Institute of Seattle near the Seattle waterfront. This is a wonderful setting overlooking Puget Sound and all the more exciting that the Burnley Gallery will be renovated this winter. Our Co-Arts show will be one of the first exhibits scheduled in this new venue.

Sales

Tentatively, all sales will be handled by The Art Institute of Seattle and are not subject to a commission. Watch newsletter for confirmation.

Publicity

Seattle Co-Arts reserves the right to use images of submitted work for Co-Arts publicity in printed and web form.

Calendar

| | |
|---------------------|---|
| Sunday, January 15: | Opening for Entries Sunday, |
| February 5: | Deadline for Art to be considered for Postcards |
| Friday, March 2nd: | Entry and application form Deadline |
| Monday, April 2: | Acceptance Notifications |
| Monday, April 30: | Delivery of Paintings |
| Saturday, May 12 : | Afternoon Reception |
| Friday, June 1: | Take-down of Show |